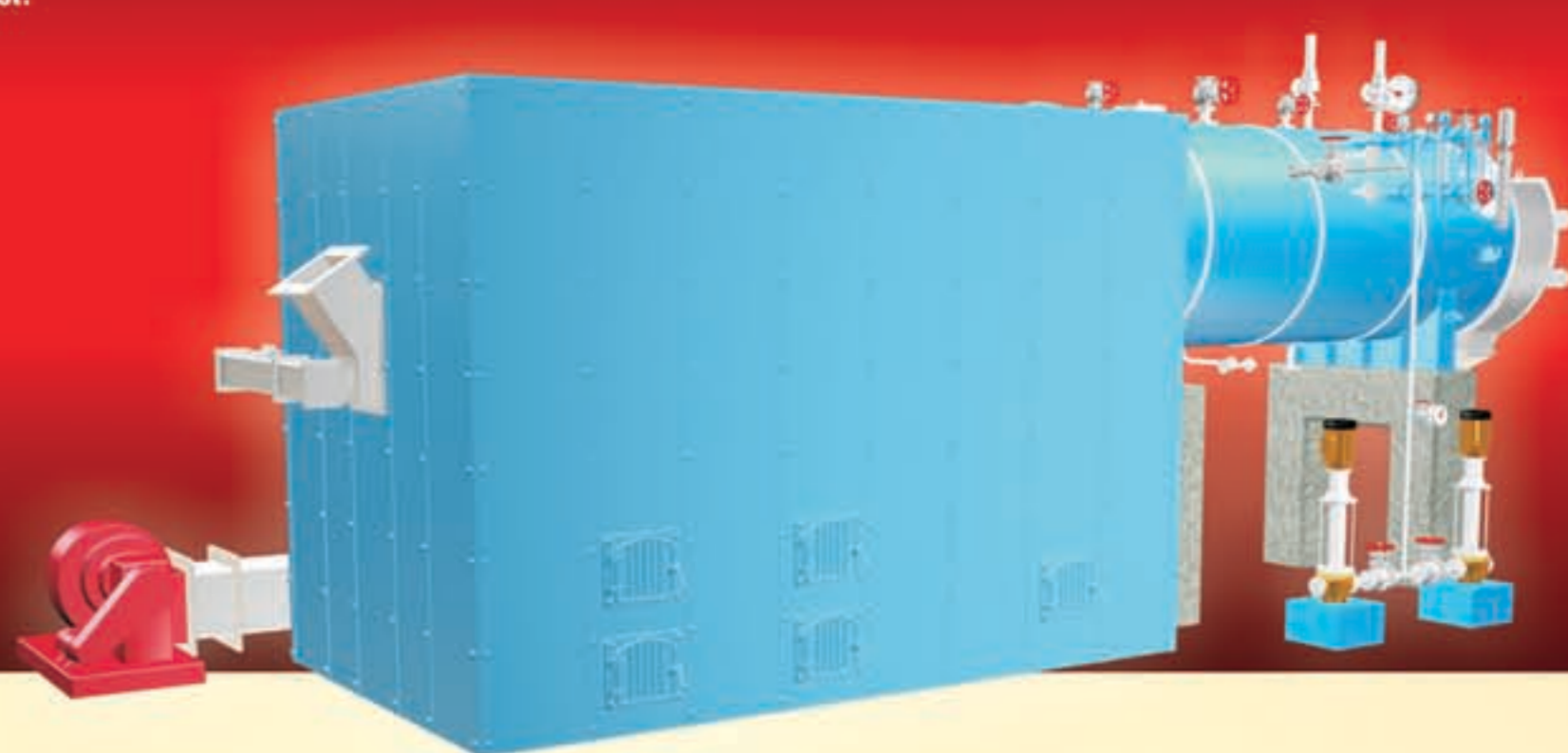


MULTIMAX

The multi-fuel, smoke tube shell type boiler

Built for efficiency. Built to last.



Technical specifications

Parameter	Unit	MXC-10	MXC-15	MXC-20	MXC-30	MXC-40	
Capacity (MCR)	kg/h	1000	1500	2000	3000	4000	
Pressure (SVLOP)*	kg/cm ² g	← 10.5 / 17.5 →					
Efficiency	- Coal	←		73	→		
	- Husk	←		70	→		
	- Wood	←		68	→		
Power supply	-	← 415VAC ± 6%, 50Hz ± 3%, 3ph, 4 wire system →					
Total electrical connected load***							
- for pressure 10.5 kg/cm ² g	- Coal	kW	7.3	9.1	11.5	16.8	17.5
	- Husk	kW	9.9	15.9	20.1	26.5	32.1
	- Wood	kW	8.0	12.1	16.4	22.8	28.4
- for pressure 17.5 kg/cm ² g	- Coal	kW	8.0	9.9	12.3	19.4	20.1
	- Husk	kW	10.6	16.6	20.9	29.1	34.8
	- Wood	kW	8.8	12.9	17.1	25.4	31.0
Approx. boiler house dimensions - LxWxH (excluding chimney)	mtrs.	15x6x4.8	15.5x6.5x5.3	16x6.5x5.5	16.8x7x5.5	17.3x7x5.5	

Note: *SVLOP - Safety Valve Lift Off Pressure. Efficiency as per BS 845 Part-1 Indirect Method. Total electrical connected load includes FWP, PA fan, ID fan & control panel

Options for increased savings

Water Pre-heater

- Recovers maximum heat from boiler flue gas
- Faster steam generation
- Easy to maintain

Pollution control

Mechanical Dust Collector

- Efficiently extracts dust from flue gases
- Low power consumption of ID fan
- Easy removal of dust/ash
- Space saving design

1 Minimal wastage

Pneumatic spreader assembly for husk firing - Automatic boiler operation and fuel feeding ensure uniform output and no fuel wastage, unlike in a manual fired boiler

2 Complete combustion

ID/FD fan supplies primary and secondary air which ensures complete combustion

3 External furnace

The external refractory brick furnace, with a fixed grate, enables combustion of high moisture agro-waste fuels

4 Fuel flexibility

Without having to replace the boiler, with just a few modifications, the boiler can be adapted to fire coal, wood, husk or bagasse

5 Ash settling chamber

Special ash settling chamber reduces carryover

6 Trouble-free operations

Imported feed water pumps, with stainless steel internals

7 Reduced downtime

Chute with sliding gate for quick and convenient ash removal

8 Shell

Fabricated from boiler quality steel plates

9 High stack temperature alarm

Prevents boiler from overheating

10 Water level controller

For auto pump operations & low water level alarm

11 Pressure switch

Cuts off fans in case of high steam pressure

12 Fusible plug

Prevents boiler failure from low water level

Lower emission levels

Effective particulate emission control is achieved with multi-cyclone Cyclomax dust collectors etc.